

THE CENTURY COUNCIL
FIGHTING DRUNK DRIVING
& UNDERAGE DRINKING

**Community Supervision of
Hardcore Drunk Driving Offenders**

Presented by:
Kimberly A. Cobb
Research Associate
American Probation & Parole Association

23rd Annual Multi-Jurisdictional Law Enforcement Conference
November 9, 2011
Green Bay, WI

APPA

We see a fair, just, and safe society where community partnerships are restoring hope by embracing a balance of prevention, intervention, and advocacy.

Membership:

- Nearly 2,000 individuals
- Over 200 agencies
- Represent U.S., Canada, and other countries
- Two Training Institutes per year

Grants:

- Info to the field
- Research
- Monographs, guidebooks, papers & articles
- Training programs
- Technical assistance



THE CENTURY COUNCIL
FIGHTING DRUNK DRIVING
& UNDERAGE DRINKING



**HARDCORE DRUNK DRIVING
COMMUNITY SUPERVISION GUIDE**

APPA
PA
A Council for Justice
CHANGE

QUIZ



A high tolerance for alcohol has nothing to do with BAC level?

Eating a meal before I drink alcohol will help absorb the alcohol and keep me from testing above the legal limit on a breathalyzer?

Body size matters--it takes more alcohol to impair a larger individual's ability to drive than a smaller individual?

Hardcore Drunk Driving Defined:

- Blood Alcohol Level of 0.15 or higher
- Repeat drunk driving offenses
- Resistant to changing behavior




Common Characteristics

- SIEGAL, ET AL. (2000)**
- Median age 35
 - High school or less level of education
 - Mostly blue-collar workers
 - Prior traffic and criminal offenses
- JONES & LACEY (2000)**
- Predominately white males
 - High percentage of alcohol dependency diagnosis



How big of a problem is HCDD'ing?


"Probationers with multiple DUI arrests were more likely than non-DUI offenders to have committed auto theft, drug trafficking, assault and illegal weapons possession."
(Webster et al., 2009, p. 10)



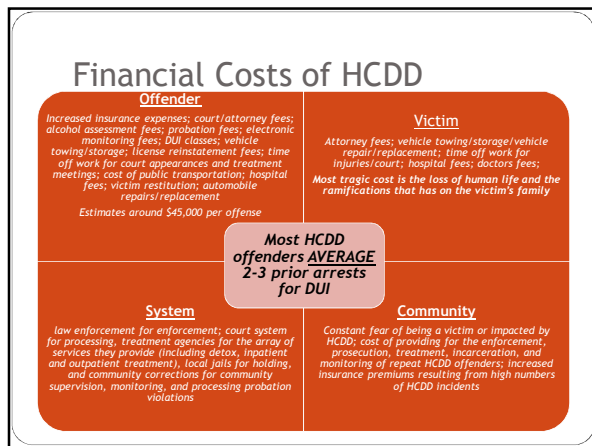
It is estimated that drunk drivers with BAC's in excess of .15 are only **1 percent** of all drivers, yet they are involved in **50 percent** of all fatal crashes.
(Simpson et al. 1996)

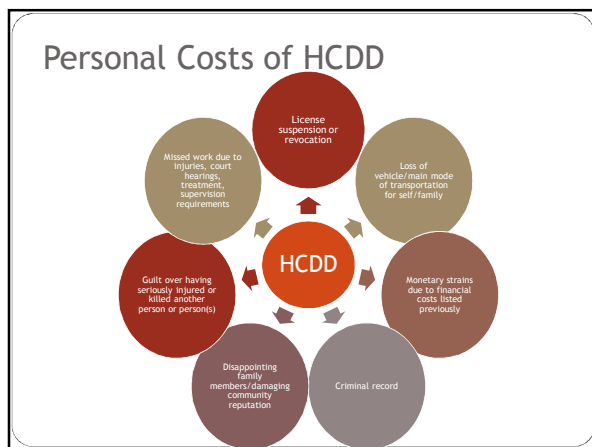
About one-third of all drivers arrested for DWI are repeat offenders and over half have a BAC over .15
(Hedlund and McCartt, June 2002)

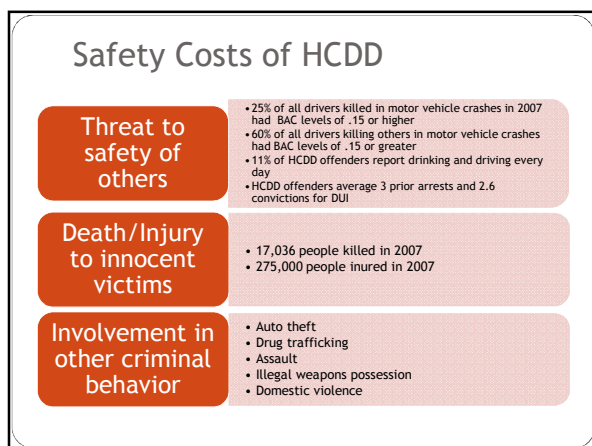
Challenges to Supervising HCDD Offenders:



- Resistant to change behavior
- Impervious to license suspension or revocation
- Transportation
- Co-Occurring Disorders







Reality is...

- Unless a fatality has occurred, HCDD offenders are typically placed on community supervision
- Most HCDD offenders are charged as misdemeanors—PPO's have more serious offenders to worry about...right?

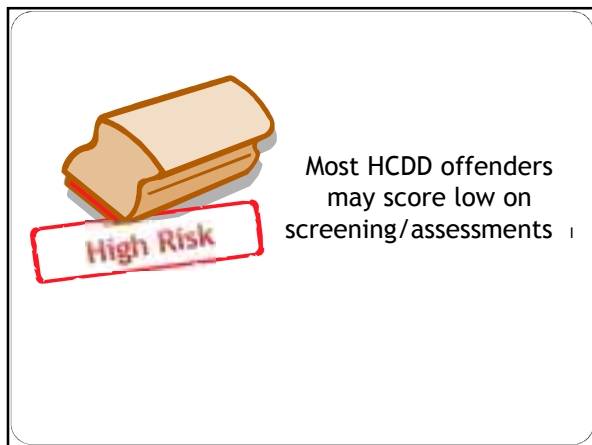


Supervision Strategies

Pre-trial
Pre-sentence
Post-sentence

Pre-trial supervision





Screening:

CAGE Questionnaire

1. Have you ever felt you should cut down on your drinking?
2. Have people annoyed you by criticizing your drinking?
3. Have you ever felt bad or guilty about your drinking?
4. Have you ever had a drink first thing in the morning to steady your nerves or get rid of a hangover (eye-opener)?

At a minimum, the pretrial officer should be requesting these pretrial conditions:

Defendant will not enter any establishment whose primary purpose is to serve alcohol and the defendant will not purchase alcohol from any establishment.

The defendant will appear for all appointments with the pretrial officer.

The defendant will comply with all scheduled court appearances.

Driving privileges suspended

Schedule and complete SAB assessment

Engage in treatment as recommended by SAB counselor

Achieve and maintain employment

Electronic Monitoring

Pre-sentence supervision

Pre-Sentence Reports

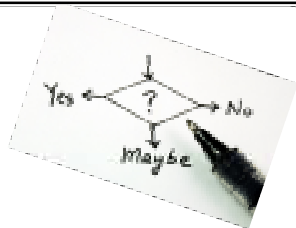
- Conduct home visits/interviews
- Vehicle registration
- Comprehensive risk/need assessment
- Identify programs, services, interventions
- Plan for restitution and other fines



Post-sentence supervision

probation

Assessment



**RECOMMENDATION: ALL HCDD OFFENDERS
SHOULD INITIALLY BE PLACED ON
HIGH-RISK SUPERVISION**

RISK: Keep in mind that HCDD offenders may score low-risk on a standard risk assessment tool.

SUBSTANCE ABUSE: All HCDD offenders should be referred for a substance abuse assessment.



MENTAL HEALTH: Many HCDD offenders have co-occurring disorders and use alcohol to mask symptoms of other mental health problems.

Supervision/Treatment Plan

- Collect information from collateral contacts
- Include the offender in the development of the plan
- Plans should be flexible and dynamic
- Should incorporate the Three "R's"
 - Realistic, Relevant, & Research-Based
- Choose appropriate electronic monitoring & alcohol testing tools for each offender



FREE ONLINE TRAINING!!!!



Enhancing Community Supervision Strategies for Hardcore Drunk Drivers

For more information:

Kimberly Cobb

Phone: (859) 244-8015

Email: kcobb@csq.org

Promising Criminal Justice Programs for DWI Offenders

- **Submit your program online:** Go to <http://www.centurycouncil.org/promising-criminal-justice-programs-drunk-drivers> and fill out the form and click submit for direct submission to The Century Council.
- **Download the Microsoft Word submission form:** You can download it, complete it and send it to us via email, fax or U.S. mail.

We would appreciate receiving these nominations by January 15, 2012 in order to launch this resource by June.

APPA Winter Training Institute

FEBRUARY 26-29, 2012
Hilton San Diego Bay Front
Check out www.appa-net.org
For more information!
